



دالكوبوند®

DALCOBOND®

Aluminum Composite Panel

DALCOBOND

AL DAHAYAN ALUMINUM PANEL FACTORY

FIRE RATED METAL COMPOSITES

COLOR CHART



DALCO BOND[®]
دالكوبوند[®]

Introduction

Al Dahayan aluminum panel factory is founded in 2010 and commercial production started by 1st March 2011.

The company is 100% Saudi owned private industry located at Sulay industrial area Riyadh, Kingdom of Saudi Arabia.

Equipped with the latest machinery and technology Al Dahayan Aluminum Panel Factory, is committed to high quality product with exclusive use of high quality raw materials, latest technology, quality control processes and professional management.

Aluminum composite panel

Aluminum Composite Panel (ACP) is a widely-used term, describing flat panels that consist of a non-aluminum core bonded between two aluminum sheets. Aluminum sheets can be coated with PVDF or Polyester paint. ACPs are frequently used for external cladding of buildings (building facades).

The main advantage of ACP is that it is very rigid and strong despite its light weight. Due to the ability of painting the aluminum in any kind of color, ACPs are produced in a wide range of metallic and non-metallic colors as well as patterns that imitate other materials, such as wood, mirror, marble, granite etc.

Applications of ACPs are not limited to external building cladding, but can also be used in any form of cladding such as partitions, false ceilings etc. Aluminum Composite Panels are also widely used within the signage industry as an alternative to heavier, more expensive materials.

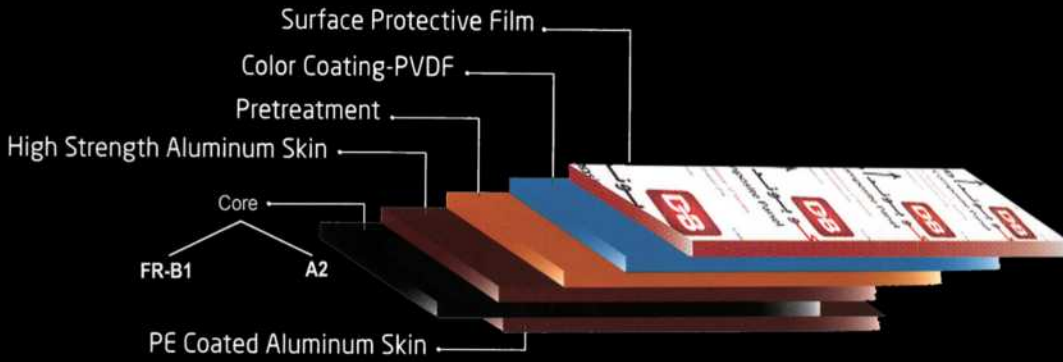
The manufacturing of "DALCO BOND" aluminum composite panel usually goes through all test requirement of national & international quality standard to ensure its best quality.

DALCO BOND is produce with top quality components sourced from well known international supplier of raw materials in this industry.



DALCO BOND®
دالكوبوند®

Product Composition



20
Years
Guarantee



Made in K.S.A.

صنع في المملكة العربية السعودية

2005-901 حاصل على شهادة الجودة



UL حاصل على شهادة



المنتج خاضع لشهادة المنتجات الخاضعة للوائح ساسو
 The Product Follows The Certification Of **S.A.S.O.** Regulated Products





Versatile Product

DALCO BOND composite panel is the most versatile product for exterior & interior use, which enhances beautification

- beyond imagination to your valued project.
- Exterior of multy storey building.
- Building facades.
- Shop fronts & signages.
- Exhibition stands.
- Canopies.
- Ceiling & partitions.
- Wall paneling.
- Circular Columns.
- Furniture.
- Soffits & beam.
- Door panels & frames.

Product Tolerance

Width : ± 2 mm

Length : + 3mm (not allowed minus error)

Thickness : ± 0.2 mm

Squareness : ≥ 5

Boe : Max 0.5%

DALCO BOND is an aluminum composite panel which have excellent flatness. thanks to the good sources of raw materials productionlines worldwide quality systems , customers comments and appreciation and plant staff.

TECHNICAL SPECIFICATIONS

1 PANEL DIMENSION

1.1 Aluminum thickness	mm	0.25 - 0.8
1.2 Panel D.B basic weight	kg/m ²	5.5 - (7.6 FR)
1.3 Standard width	mm	1240 /1500
1.4 Minimum / maximum width	mm	1220 - 1500
1.5 Standard length	mm	2440 - 5800
1.6Minimum / maximum length	mm	2000 -7000

2 DIMENSION TOLERANCES

2.1 Panel thickness	mm	-0.00 + 0.20
2.2 Panel width	mm	-0.00 + 2.00
2.3 Panel length	mm	-0.00 + 4.00
2.4 Defference diagonals	mm	3

3 COATING FEATURES

3.1 Painted surfaces and thicknesses	jm	Pvdf 70% , Kynar 500 . Layers 25/32 Micrones
Front surface (front sheet)	jm	Light grey epoxy . 1 Layer 10 Micrones
Back surface (back sheet)		

4 PRE-TREATMENT

4.1 Pre - treatment		Degreasing and chromium free treatmeny on top and back side
4.2 Interior surface finish		Protection free chrome primer

5 ALUMINUM FEATURES

5.1 Aluminum - magnesium alloy	NORM EN 573 / 485	3005 H27 - 3003 H18
5.2 Ultimate tensile strength (RM)	N / mm2	> 205
5.3 Yield strength (Rp 0.2)	N / mm2	> 190
5.4 Elongation (A5)	%	> 4
5.5 Strength module (E)	N / mm2	70000

6 ALUMINUM FEATURES

6.1 LDPE & FR layers thicknesses	(mm)	2.0 - 6.0
6.2 Aluminum sheet thicknesses	(mm)	0.25 - 0.8
6.3 Possibility of other paints kinds such as high durable polyster		



P.O.Box 2094 Riyadh 11491 Saudi Arabia
Mob.: 0500044331-0500550765-0500332755

www.dalcobond.com dalcobond.blogspot.com

dalcobond.business.site

[dalcobond1](https://www.facebook.com/dalcobond1)

[dalcobond](https://www.linkedin.com/company/dalcobond)

[dalcobond](https://www.youtube.com/channel/UCdalcobond)

[dalcobond](https://www.instagram.com/dalco_bond)

[dalcobond](https://www.youtube.com/channel/UCdalcobond)

[dalco_bond](https://www.instagram.com/dalco_bond)



Profile & Color Card



Location



Website



DALCO BOND®
دالكوبوند®

OUR CLIENTS





METALLIC COLORS



DB-1001 Bright Silver



DB-1003 Pale Silver



DB-1004 Champagne Silver



DB-1005 Grey Silver



DB-1006 Silver Grey



DB-1007 Dark Pearl



DB-1010 Ch.Gold Classic



DB-1011 Champagne Gold



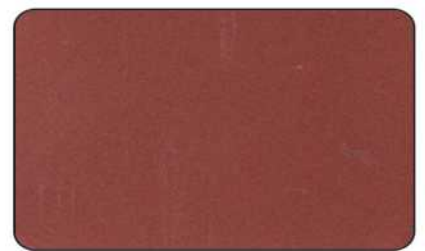
DB-1012 Gold



DB-1013 Metallic Gold



DB-1015 Copper



DB-1016 Red Silver



DB-1017 Chocolate Brown



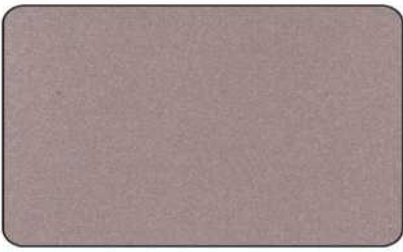
DB-0927 Silver Blue



DB-0917 Metallic Jade



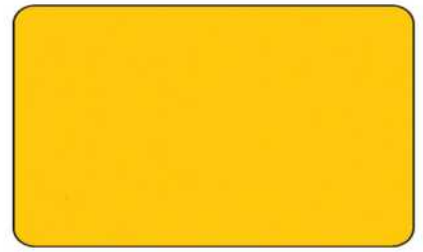
SOLID COLORS



DB-1030 Metallic Rose



DB-0901 Orange



DB-0905 Yellow



DB-0907 Ivory



DB-0908 Pure White



DB-0909 Beige



DB-0910 White



DB-0913 Red Coffee



DB-0914 Dark Red



DB-0915 Red



DB-0918 Fresh Green



DB-0919 Finland Green



DB-0920 Green



DB-0923 Spanish Blue



DB-0924 Denim Blue



SOLID COLORS



DB-0925

Blue



DB-0926

Sea Blue



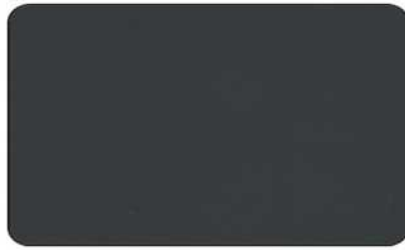
DB-0930

Black



DB-0935

Brown



DB-0939

Dark Grey



DB-0940

Grey



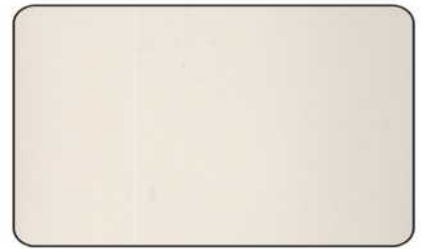
DB-1100

Purple



DB-1080

Romancia



DB-0911

White Ivory



DB-0912

White HG



DB-0931

Black HG



DB-0961

Pearl White



DB-0962

Sparkle Red



DB-0963

Sparkle Black



Soon



SPECIAL COLORS



DB-1040

Burgundy



DB-1041

Teak Wood



DB-1042

Rose Wood



DB-1043

Ebony Wood



DB-1044

Ostrom Wood



DB-1045

Deep Mahogany



DB-1046

Black Walnut



DB-1047

Brown Wood



DB-1048

Char Brown Wood



DB-1049

Clay Wood



DB-1050

Desert Brown



DB-1051

Stone Pattern



DB-1019

Brush Silver



DB-1017

Gold Brush



DB-3001

Silver Mirror



DB-3002

Gold Mirror